

REIVER ELITE AND ZIPPA RANGE FITTING GUIDE

- Fit a body protector over light clothing, it should be a snug fit!

It is important not only to take measurements but to try on the garments for each individual concept, width and length. Consider figure types, as measurements alone will not give you the full picture.

Take the following measurements:

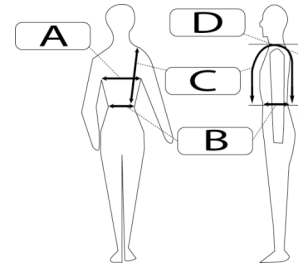
A: CHEST

B: WAIST

C: OVER SHOULDER – front waist over shoulder to back waist.

D: BACK LENGTH – from the nape of neck to the point the garment should finish. When sitting it is usually a hand width above seat. (In line with the pockets on a normal pair of jeans)

The body protector should not touch the saddle whilst riding!



Using the measurement chart, found on the garments user instruction or on Airowear product cards, select the nearest size body protector to try on. Use the chest width as your starting point.

If the measurements fall at the top or bottom of a size range we recommend you try on more than one garment size. If all the measurements fall into different sizes then look at the width and length completely separately; try on several garments one for each individual measurement. In these cases a bespoke garment may need to be ordered and the made to measure form should be completed.

Once you think you have the correct size body protector on there are several things to look for:

1. Check that the Red Velcro is covered on the Reiver Elite or the white stitch line on the Zippa Range, if it is not then the body protector does not fit correctly, and may reduce the protection offered.
2. When correctly fitted the protector should cover the whole of the circumference of the torso.
3. The double layer of foam at the front should reach at least 25mm below the last rib in line with your chest. (This is about two fingers width) without inhibiting the riding position. If this is not easy to establish then check the garment finishes about a hands width above the hips.
4. The body protector should not touch the saddle whilst riding! Remember that there are different back lengths to each size (4 in Reiver Elite & 3 in Zippa). If you do not stock the size you need, try on the next size up or down respectively knowing that the rest of the garment won't necessarily fit but looking only at where the back length finishes.

Reiver Elite only: If the waist only falls into one size up from your chest, both in measurements and after trying on garments then you can order a Wider Waist "WW" fitting which gives you an additional 4.0cm of coverage at the waist only. This is ideal for children that have not fully grown! The "WW" garments are stock items and do not incur any additional cost!